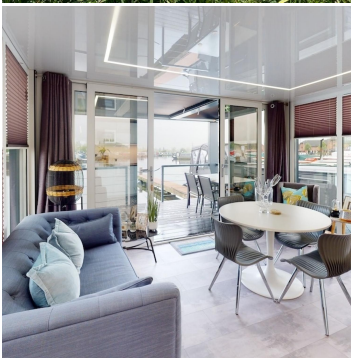




# BOAT SALES

LAKELAND LEISURE ESTATES



## Floating Lodge - Dilly Dally

**Price: £199,995**

### Description

Immerse yourself in opulence with the exceptional floating lodge experience at Barton Marina. Discover a haven of elegance featuring two luxurious en-suite double bedrooms, thoughtfully designed interiors, and captivating panoramic full-length windows that seamlessly connect you to the beauty of the surrounding nature.

Meticulously crafted to optimise space and provide expansively comfortable living, the floating lodge reveals a stunning open-plan living area. The modern, pristine white kitchen, equipped with seamlessly integrated appliances such as a hob, upgraded combi-microwave grill, fridge/freezer, and dishwasher, effortlessly combines functionality with stylish elegance. Positioned to offer breath-taking views, the living area boasts floor-to-ceiling windows that blur the line between indoor and outdoor spaces. Complete with plush seating, including a comfortable sofa and armchair, and a dining table with accompanying chairs, this space is curated for relaxation and enjoyment.

Step through the sliding patio doors onto the covered composite deck, where you can relish the surroundings regardless of the weather. The deck features ample space for a table and chairs, creating the ideal setting for leisure and alfresco dining.

Elegant flooring guides you to the two double bedrooms, each featuring patio doors leading to an external terrace (optional extra). These well-designed bedrooms showcase striking full-height headboards, convenient reading lights, and access to well-appointed en-suite facilities. Enjoy the convenience of double shower cubicles, WCs, towel rails, and sinks with vanity units.

To ensure year-round comfort, the floating lodge is equipped with efficient electric panel heaters and refreshing air conditioning, guaranteeing a cosy and delightful stay, regardless of the season.

The Floating Lodge at Barton Marina is versatile, serving as a holiday home, a permanent residence, or a buy-to-let investment.

### Key Features

- 2 bedrooms
- 2 bathrooms
- 13.6m long by 4.5m wide
- 42m<sup>2</sup> living area
- Electric central heating and hot water system
- 1000 litre water and waste tanks

### Floating Lodge Walkthrough

Lakeland Leisure operates a network of picturesque marinas nestled across England's most beautiful waterways, and are renowned for providing a tranquil and secure haven for boating enthusiasts, offering a perfect blend of serene waters, vibrant communities and top notch facilities. Seeking to share the magic of these marinas, Lakeland Leisure decided to partner with none other than [Adam Lind, the man behind @adam.floatinghome](#).

To showcase the allure of Lakeland Leisure Marinas, Adam was invited to visit and explore everything there is to love about our 5 inland locations. Check out Adam's virtual tour of our fantastic floating lodge at Barton Marina.

#### Disclaimer

Whilst every care has been taken in the preparation of these specifications, no guarantee is given or implied as to their accuracy. These particulars are intended only as a guide and they do not constitute a term of any contract. Lakeland Leisure Estates Ltd advises prospective purchasers to obtain an independent survey from a qualified Marine Surveyor to satisfy themselves as to the condition of the craft.

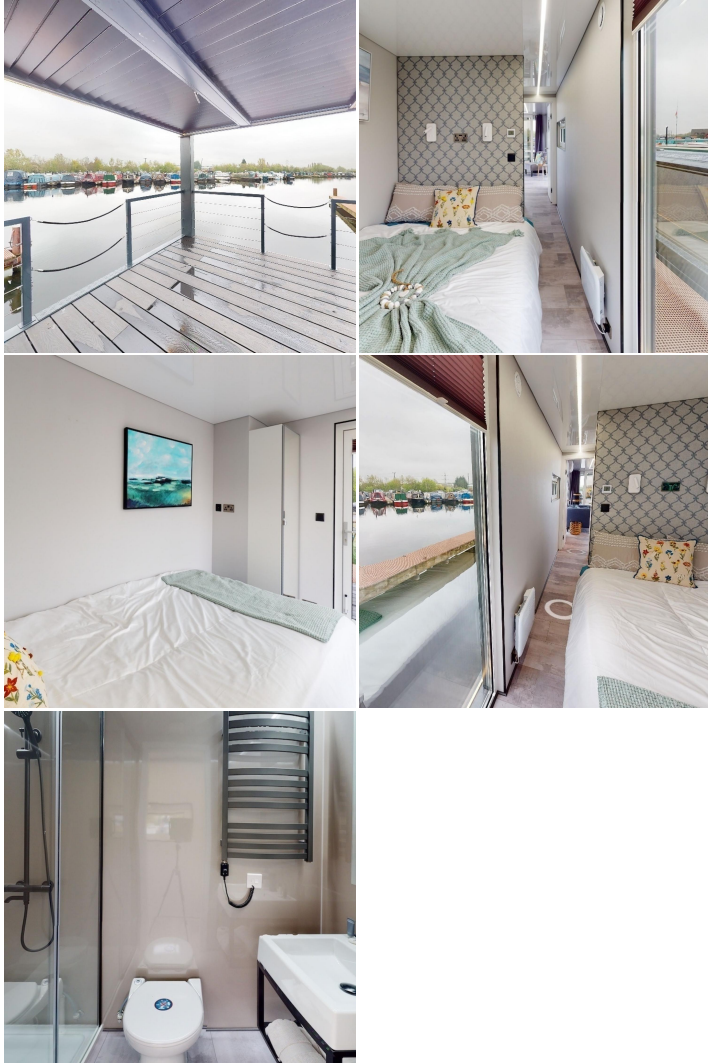
Contact Us

Call: 07585 956 804

Email: [andy@lakelandleisureboatsales.co.uk](mailto:andy@lakelandleisureboatsales.co.uk)

[www.lakelandleisureboatsales.co.uk](http://www.lakelandleisureboatsales.co.uk)





## Additional Specs

### Disclaimer

Whilst every care has been taken in the preparation of these specifications, no guarantee is given or implied as to their accuracy. These particulars are intended only as a guide and they do not constitute a term of any contract. Lakeland Leisure Estates Ltd advises prospective purchasers to obtain an independent survey from a qualified Marine Surveyor to satisfy themselves as to the condition of the craft.

Contact Us

Call: 07585 956 804

Email: [andy@lakelandleisureboatsales.co.uk](mailto:andy@lakelandleisureboatsales.co.uk)

[www.lakelandleisureboatsales.co.uk](http://www.lakelandleisureboatsales.co.uk)

