



# BOAT SALES

LAKELAND LEISURE ESTATES



## Mr P - Traditional

**Price: £19,995**

### Key Features

<b>Berths:</b>	4
<b>Length &amp; Type:</b>	50ft Narrowboat
<b>Year:</b>	1988

### Description

Mr P is a 50ft Traditional Narrowboat that embodies the craftsmanship of the renowned Canalcraft Boatbuilders. With a strong heritage and a new base plate installed in 2015, this boat offers a solid foundation for a passionate new owner to breathe new life into it. As a "Project Boat," Mr P's exterior requires a full repaint and restoration, but the interior has been well-preserved and offers a charming, cosy atmosphere that retains its classic character. The interior needs just a touch of TLC, making it an ideal venture for those who enjoy DIY projects and wish to create a unique space on the water.

Step into the well-equipped galley, where functionality meets comfort. It features a 4-burner gas hob and a matching double oven, perfect for cooking hearty meals on board. A 12v fridge ensures your essentials are kept cool, while the cream-colored sink and drainer add a touch of brightness to the space. With generous countertop space and an array of cupboards, this galley offers ample storage, making meal prep a breeze, whether you're docked or cruising down the canal.

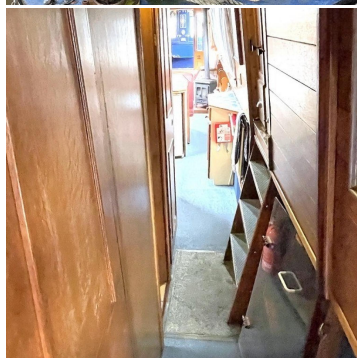
The saloon of Mr P is designed for relaxation and versatility. Its L-shaped sofa is ideal for lounging and can be easily converted into a double bed, offering extra sleeping space for guests. For added comfort, two upholstered seats transform into a single bed. A solid fuel stove sits at the heart of the room, casting a warm glow during cooler evenings. The space is completed with thoughtfully designed storage and display units, including cupboards and shelving, providing plenty of room to store books, keepsakes, and essentials while adding a personalized touch to your floating home.

The utility room is a practical hub, offering easy access to the engine and a dedicated cupboard for all electrical systems. Here, you'll find everything you need for safe and enjoyable cruising, including a comprehensive inventory of life jackets, a windlass, mooring pins, and other essentials. This space ensures that Mr P is ready for the waterways, making each journey smooth and hassle-free.

Retreat to the cosy bedroom, where comfort meets functionality. The double bed provides a restful night's sleep, while a built-in wardrobe and dressing table ensure you have ample space to store clothing and personal items. Additional storage solutions are cleverly incorporated, allowing you to keep your living area tidy and organized as you explore the waterways.

The bathroom is thoughtfully designed with practicality in mind. It features a pump-out toilet and a Porta Potti cassette toilet, offering flexibility during longer trips. A shower provides a refreshing space to unwind after a day of cruising, while the wash basin and vanity unit offer ample storage for toiletries and other essentials. The compact layout ensures that the space is both efficient and comfortable, allowing you to freshen up with ease.

Mr P is more than just a boat; it's a canvas waiting for your creative touch. With its solid structure and timeless design, this narrowboat offers the perfect opportunity to create a personalized home on the water, blending classic charm with modern comfort. Whether you're a seasoned boater or a newcomer eager to embark on your first project, Mr P promises a rewarding journey and a life of adventure along the canals.



### Disclaimer

Whilst every care has been taken in the preparation of these specifications, no guarantee is given or implied as to their accuracy. These particulars are intended only as a guide and they do not constitute a term of any contract. Lakeland Leisure Estates Ltd advises prospective purchasers to obtain an independent survey from a qualified Marine Surveyor to satisfy themselves as to the condition of the craft.

Contact Us

Call: 07585 956804

Email: [andy@lakelandleisureboatsales.co.uk](mailto:andy@lakelandleisureboatsales.co.uk)

[www.lakelandleisureboatsales.co.uk](http://www.lakelandleisureboatsales.co.uk)





## Additional Specs

- **Length/ Boat Style:** 50' Trad
- **Year:** 1988 – New Base Plate Fitted 2015
- **Number of bathrooms:** 1
- **Berths:** 2 +2
- **Water Tank Capacity:** Estimated 300 Litres
- **Waste Tank Capacity:** Estimated 150 Litres
- **Fuel Tank Capacity:** Estimated 100 Litres
- **Hull By/ Fit out by:** Canalcraft Boatbuilder
- **Layout stern to bow:** Utility room, Bedroom, Bathroom, Galley, Saloon
- **Engine and gearbox:** Thornycroft 1.5 / PRM gearbox
- **Engine hours/Last service:** 3829 / Owner serviced
- **Boat Safety Certificate:** 04/06/2026
- **Last Blacking & type:** 2019 / 2 Pack Epoxy
- **Hull thickness:** 6:6:4 – NB: New 6mm base plate 2015
- **Inspection hatch and location:** Weed hatch to stern
- **P/out or Cassette:** Pump Out & Cassette
- **Internal cabin height:** 6' 4"
- **Insulation:** Polystyrene
- **Last Survey:** 2015
- **External Covers:** Full cratch cover (new 2019)
- **Side Hatches and location:** Yes x 1 bathroom
- **Batteries:** 3 = 1 x Starter & 2 x Domestic
- **Electric Supply:** Engine, Shoreline, Domestic Batteries, Inverter, Battery Charger
- **Galvanic Isolator:** Yes
- **Hot Water Supply:** Engine, Calorifier, Alde Gas Boiler
- **Cabin Heating:** Solid Fuel Stove
- **Central heating type:** Alde Gas Boiler to Radiators
- **Gas Cylinders No+ type:** 2 x 13Kg / Propane

### Disclaimer

Whilst every care has been taken in the preparation of these specifications, no guarantee is given or implied as to their accuracy. These particulars are intended only as a guide and they do not constitute a term of any contract. Lakeland Leisure Estates Ltd advises prospective purchasers to obtain an independent survey from a qualified Marine Surveyor to satisfy themselves as to the condition of the craft.

Contact Us

Call: 07585 956804

Email: [andy@lakelandleisureboatsales.co.uk](mailto:andy@lakelandleisureboatsales.co.uk)

[www.lakelandleisureboatsales.co.uk](http://www.lakelandleisureboatsales.co.uk)

