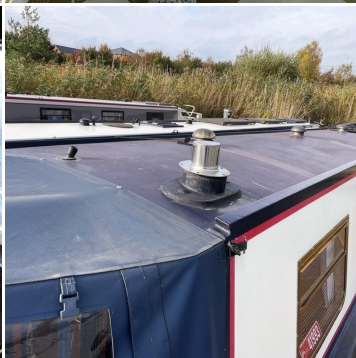




# BOAT SALES

LAKELAND LEISURE ESTATES



## Navigator - Semi Traditional

**Price: £59,995**

### Key Features

<b>Berths:</b>	4
<b>Length &amp; Type:</b>	50ft Narrowboat
<b>Year:</b>	2010

### Description

Welcome aboard Navigator, a beautifully maintained 50ft Semi-Traditional narrowboat with a single, loving owner since its launch in 2010. Every inch of this boat reflects attentive care, with a comprehensive service log meticulously documenting each detail. The engine has been serviced approximately every 250 hours, providing peace of mind that Navigator is in peak mechanical condition. Externally, the boat is in remarkable shape, with a well-preserved, sleek finish. Step inside, and you'll be met with a pristine, almost-new interior that combines timeless charm with modern comforts – Navigator truly feels like a floating home.

The galley of Navigator is a light-filled culinary space designed with functionality and style in mind. It features a Stoves 500 free-standing 4-burner gas cooker with a separate oven and grill, perfect for preparing everything from a quick breakfast to a gourmet dinner. A Shoreline 12v fridge provides ample cooling space for perishables. Natural light pours through the swan hatch and sliding galley window, creating an open and airy atmosphere. Pristine worktops offer plenty of room for meal prep, while beautifully crafted cupboards and drawers deliver generous storage options, ensuring all kitchen essentials are easily accessible and organised.

The heart of Navigator is its versatile lounge, which combines comfort and functionality. The L-shaped seating arrangement provides a cosy and flexible area for dining and relaxation, equipped with both single and double-sized tables that adapt seamlessly to your needs. When evening falls, the seating easily converts into an additional double bed for guests. The lounge is warmed by a Refleks diesel stove set on a beautifully tiled hearth, creating a cosy ambiance during cooler months. A Hitachi small TV with a remote is thoughtfully included, perfect for unwinding with a movie or favorite show. Glazed double doors open to the cratch-covered well deck, which is in pristine condition and offers additional seating space to enjoy the outdoors, rain or shine.

Retreat to the spacious master bedroom, featuring a 4' queen bed that can be extended to 4'6" for added comfort. This thoughtful design includes a large under-bed storage area, perfect for storing bulkier items. The room also boasts a full-size wardrobe and additional storage solutions, making extended stays or living aboard incredibly convenient. Every detail in the master bedroom has been designed to enhance comfort and functionality, creating a private, relaxing retreat.

The bathroom aboard Navigator is designed to offer a touch of luxury in a practical space. It features a Thetford cassette toilet with an extra cassette for convenience, and a full-size shower with elegant, glazed bifold doors. The vanity unit includes a wash basin, while additional storage compartments provide ample space for toiletries and essentials, making it easy to keep the space tidy and organised.

Navigator is more than a vessel; it's a rare find that marries exceptional quality, craftsmanship, and care. Whether you're planning a life on the water or a perfect holiday getaway, this lovingly maintained narrowboat is ready for its next journey. Don't miss the chance to own this exceptional home on the water!

### Disclaimer

Whilst every care has been taken in the preparation of these specifications, no guarantee is given or implied as to their accuracy. These particulars are intended only as a guide and they do not constitute a term of any contract. Lakeland Leisure Estates Ltd advises prospective purchasers to obtain an independent survey from a qualified Marine Surveyor to satisfy themselves as to the condition of the craft.

Contact Us

Call: 07585 956804

Email: [andy@lakelandleisureboatsales.co.uk](mailto:andy@lakelandleisureboatsales.co.uk)

[www.lakelandleisureboatsales.co.uk](http://www.lakelandleisureboatsales.co.uk)





## Additional Specs

- **Length/ Boat Style:** 50ft Semi Trad
- **Year:** 2010 – 1 Owner from New
- **Number of bathrooms:** 1
- **Berths:** 4
- **Water Tank Capacity:** 400 Litres
- **Fuel Tank Capacity:** 360 Litres
- **Hull By/ Fit out by:** Skater Marine / Canalside Narrowboats Ltd
- **Layout stern to bow:** Pram cover semi trad stern, Bedroom, Bathroom, Galley, Dinette/Saloon
- **Engine and gearbox:** Beta Marine 38hp / PRM 150 D2
- **Engine hours/Last service:** 4,160 / Engine serviced every 250 cruising hours
- **RCD/RCR Compliance:** Yes, full original owner's manual with declaration of conformity and owners log recording all services, blacking and replacements / upgrades etc over 14 years of ownership
- **Boat Safety Certificate:** 02/08/2026
- **Last Blacking & type:** May 2021 – 2 Pack Epoxy Coating
- **Hull thickness:** 10:6:4
- **Inspection hatch and location:** Weed hatch via semi trad stern (quick release)
- **P/out or Cassette:** Thetford cassette + 1 spare cassette
- **Internal cabin height:** 6' 6"
- **Insulation:** Spray Foam
- **Last Survey:** One Owner from new so not required
- **External Covers:** Semi Trad Pram Cover & Well Deck Cratch Cover
- **Side Hatches and location:** 1 x Galley
- **Batteries:** 4 = 1 x Starter & 3 x Domestic
- **Electric Supply:** Engine, Shoreline, Domestic Batteries, Sterling 2.5Kw Inverter, A to B Charger
- **Galvanic Isolator:** Yes
- **Hot Water Supply:** Engine, Calorifier, Webasto diesel boiler
- **Cabin Heating:** Refleks diesel stove
- **Central heating type:** Webasto diesel boiler to radiators
- **Gas Cylinders No+ type:** 2 x 13Kg / Propane

### Disclaimer

Whilst every care has been taken in the preparation of these specifications, no guarantee is given or implied as to their accuracy. These particulars are intended only as a guide and they do not constitute a term of any contract. Lakeland Leisure Estates Ltd advises prospective purchasers to obtain an independent survey from a qualified Marine Surveyor to satisfy themselves as to the condition of the craft.

Contact Us

Call: 07585 956804

Email: [andy@lakelandleisureboatsales.co.uk](mailto:andy@lakelandleisureboatsales.co.uk)

[www.lakelandleisureboatsales.co.uk](http://www.lakelandleisureboatsales.co.uk)

